

DETAILS:

Product ID: Fixed Glass Splash Panel

Description: The fixed glass splash panel is a frameless, stationary shower screen secured to the ceiling.

HMI

4795 Shepherdsville Road

Louisville, KY 40218

Tel: 502-969-4059

Fax: 800-313-4195

hmiglass.com

FEATURES:

- Stationary tempered glass panel
- Reversible for left or right installation
- Mounting hardware options (U-Channel or Clamps)
- Custom sizing & fabrication

SPECIFICATIONS:

Aluminum: U-Channel is fabricated with extruded 6000 series billet

Glass Thickness: 3/8" (10mm) to 1/2" (12mm)

Clamps: Solid forged brass

CODE COMPLIANCE:

- ANSI Z.97.1 (Tempered Glass)
- CPSC 16CFR1201 II (Glazing Materials)
- ASTM C1048-85 (Anodized Finishes)
- USFS DD-G-1403B (Tempered Glass)
- SGCC Certified

AVAILABLE FINISHES*:

- CH - Chrome
- NI - Brushed Nickel
- MB - Matte Black
- RB - Roman Bronze
- DA - Dark Anodized Oil Rubbed Bronze
- GO - Gold (brass)
- PN - Polished Nickel
- CB - Champagne Bronze

GLASS:

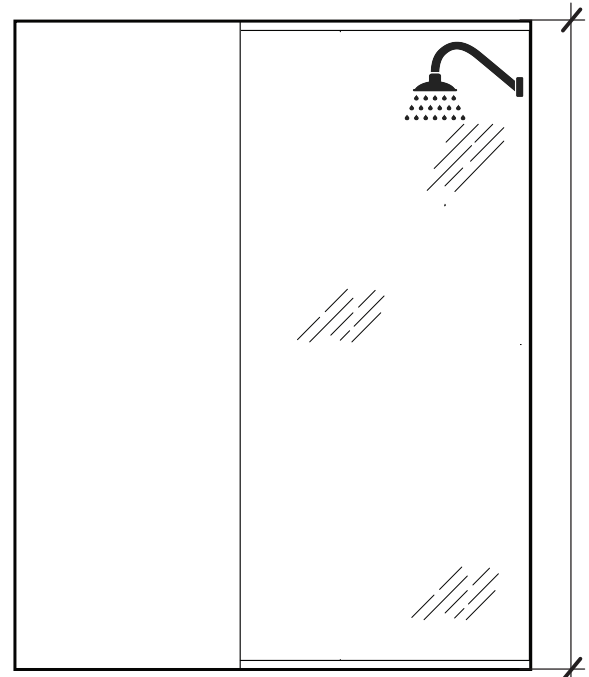
- 3/8" clear standard
- Compatible with HMI **C.10** Protective Glass Coating*
- Compatible with HMI Canvas - Digital In-Glass Printing*
- Compatible with HMI - Vista*
- Additional colors/patterns available*

HARDWARE

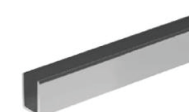
- U-Channel or Clamps*
- Optional Robe Hook*
- Optional Towel Bar*



DRAWINGS NOT TO SCALE



Min. Recommended Width = 36"



3/4" Deep Channel for 3/8" Glass



1-1/4" Deep Channel for 3/8" Glass